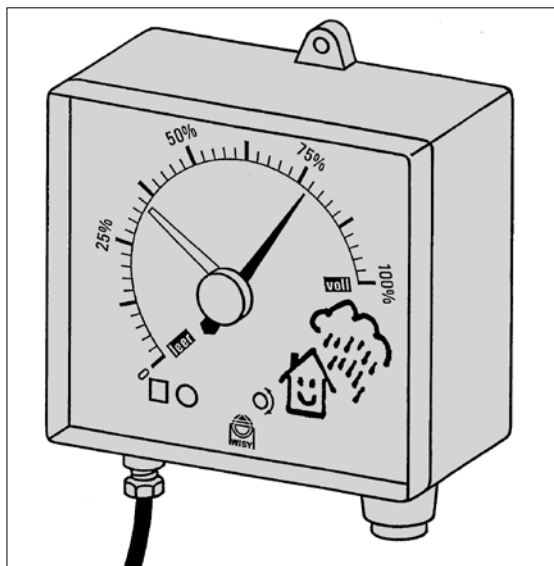




RAINWATER HARVESTING TANK LEVEL GAUGES

Universal Pneumatic Tank Contents gauge with performance membrane.

- Housing suitable for wall mounting and manufactured from high-impact plastic
- suitable for roof areas up to 3,000 sq. m
- Fully adjustable for tank heights between 900 and 3000mm.
- Remote indication up to 50m.
- Linear performance membrane.
- Zero-correction.
- Accurate to within +/- 3% of full scale deflection.
- Pointer to monitor consumption.
- Universal capillary connection suitable for hose or copper tubing with 6mm outside diameter.
- Temperature range: -5C to +55C.
- Dimensions (mm): 175 high x 145 wide x 60 deep



The Pneumatic Tank Contents Gauge measures the hydrostatic liquid pressure at the bottom of the tank which is variable, depending on the specific gravity of the liquid and the liquid head.

Normally, such liquid head measurement starts approximately 20mm above the bottom of the tank and the liquid head pressure is converted into the required units on the instrument dial.

The dial displays the liquid height in %.

Pressure is built up in the capillary tube by means of the pump incorporated in the gauge, until equivalent to the hydrostatic pressure above the bottom of the tank. The pointer has now reached the maximum reading, and the pressure created by the pump has displaced the liquid column from the tube. The air escapes from the tube end at the bottom of the tank in bubbles, whilst the pointer remains in position to be read off.

Two version are available:

FA9910 Manual version with hand pump

FA9911 Electric version with 240v pump

NB continuous development may necessitate change in these details without notice E&OE

