

# Rainwater Header Break Tank

## Model AB18T - Datasheet

### Description

Rainwater header tank supplies rainwater under gravity to appliances with an automatic mains water backup facility. The primary benefit of this header system is the continuation of water supply during electrical power failures.

The rainwater model is similar to the AB18 but features a second float valve – for mains water top-up, set to open at a lower level. Typically the cistern will be full of rainwater having been pumped from a large underground storage tank. If there is insufficient rainwater or electrical failure, the cistern will automatically top-up with mains water.

The AB18T should be mounted sufficiently higher than the application – e.g. 5 m = 0.5 bar. *Note – minimum pressure required for washing machines.* Where there is insufficient head refer to pumped systems - “Boost-A-Break” (BTAB) or “Midi-Break” (BTMIDI).

Up to 10 litres of rainwater can be drawn off before the mains float valve opens. In practice, the rainwater float valve normally fills at the same rate as the draw off preventing unnecessary mains top-up when rain water is available.

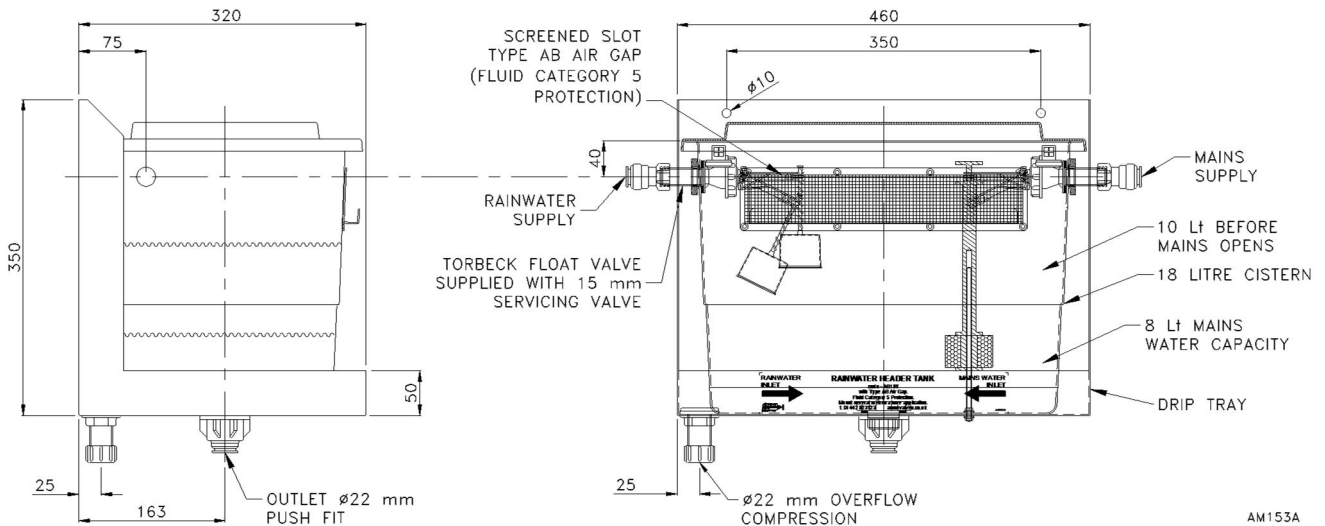
### Connection Pipes

The outlet connection is 22 mm push-fit. Two servicing valves are supplied (15 mm compression) – as required by the Water Regulations (G16.4) – which must be fitted upstream of each float valve. The overflow is 22 mm plastic compression.

### Specification

Pressure Supply	10 bar max.
Cistern Capacity	18 Litre nominal (8 Lt mains)
Inlet Size	15 mm push-fit (into float valve)
Servicing Valve	15 mm compression (supplied)
Outlet Size	22 mm push-fit
Temperature	25° max. ambient
Filling Rate	0.2 Lt/s @ 1.0 bar (maintained)
	0.3 Lt/s @ 1.5 bar (maintained)
Approval	KIWA UK 0903703 (no pump)

### Dimensions



AB18T – Rainwater header with Type AB air gap. Supplied complete with stainless steel screened slot, wall bracket incorporating drip tray. Also supplied – two float valves and two servicing valves

### Applications

Fluid Category 5 applications (providing sufficient head)

- Toilets
- Clothes washing machines
- Hose Union Taps
- Underground or surface irrigation – see HUBG datasheet
- Applications deemed to be Category 5 by water company

### Water Regulations

Clause G14.2 makes it clear that rainwater (greywater) is Fluid Category 5 per se and therefore a Type AB air break is required to the mains (wholesome) supply, irrespective the Fluid Category application. Greywater is not suitable for domestic use and is generally used for WCs and washing machines.

### Codes and Descriptions

Size	Code	Description
18 lt	AB18T	Rainwater Header Break Tank Wall Tray