

# POLYETHYLENE STORAGE TANKS

- Bulk rainwater storage tanks for above ground use.
- Use for storing pre-filtered water.
- Ideal for gardeners, farmers, plant nurseries etc.
- Rotationally moulded in the UK
- A range of sizes available from 1200 to 20,000 litres.
- Can be supplied with threaded connections, taps and level gauges.
- Large easy-access lid.
- Can be easily linked together



## Jumbo and Super Jumbo polyethylene above ground tanks.

These UK manufactured storage tanks are available in various sizes.

When used with our *Wisy* Downpipe or Vortex filters, these provide a cost effective means of storing large volumes of *clean* water for irrigation, washdown and other external uses. The 280-micron filtration gives good quality clean water suitable for a variety of uses.

The smaller tanks are ideal for garden irrigation water (*the 1200-litre model is equivalent to six standard water butts*). The addition of a pump will provide a pressurised supply.

Larger models can be used by farmers to provide free water for washdown use or for filling spraying equipment. By linking together two or more tanks, a larger storage volume is easily achieved; existing systems can be added to as desired in order to increase capacity.

We can supply these as bare tanks or as complete systems with filter units and submersible or suction pumps.



## RAINWATER HARVESTING & THE HOSEPIPE BAN

Where a harvesting system is used to store only rainwater (i.e. no back-up from the mains supply), the stored rainwater is exempt from hosepipe usage restrictions. Collecting water during the wet periods means that you can continue to water your garden for longer when the drought arrives.



Great for .....



**Gardening**



**Livestock**



**Horticulture**



**Washdown**



We are founder members of the UK Rainwater Harvesting Association.



We are the UK's sole agent and distributor of Wisy products for rainwater utilisation.

DS PT1201

### A word about irrigation.

Unlike domestic harvesting systems, it is difficult to predict how much water is required to irrigate any given area. There are many variables which affect this; the type of soil and its ability to hold moisture is a major factor, and a good healthy soil with lots of organic matter will retain moisture far better than a light soil which rapidly dries out. Also the type of plants being grown will affect how much water they demand.

The choice of storage volume is therefore very much an individual one, and is frequently dictated by available space and budget. As water quality is less important than with domestic systems, it is possible to store water for much longer periods, so the storage volume can be greater.



## Tank volumes and dimensions

Tank volume	Height in mm.	Diameter in mm.
1200 litres Jumbo	1300	1140
1220 litres 'Slim Jim' *	1400	2060 long x 660 wide
1340 litres Jumbo	1280	1220
2000 litres Jumbo	1500	1400
2500 litres Jumbo	1300	1650
3050 litres Jumbo	1810	1700
3200 litres Jumbo	1650	1650
4000 litres Jumbo	1650	1900
5500 litres Jumbo	2200	1860
7000 litres Super Jumbo	1820	2400
8500 litres Super Jumbo	2060	2650
9500 litres Super Jumbo	2650	2440
12000 litres Super Jumbo	2560	2600
16000 litres Super Jumbo	3350	2600
20000 litres Super Jumbo	4150	2600

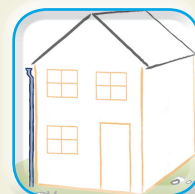
\* 'Slim Jim' is a rectangular tank ideal for confined spaces, all others are cylindrical



RAINHARVESTING SYSTEMS Ltd. Bisley, Glos. 01452 772000  
www.rainharvesting.co.uk



WATER SOLUTIONS FOR EVERYONE



Private housing



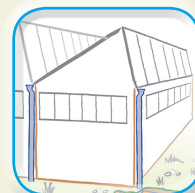
Social housing



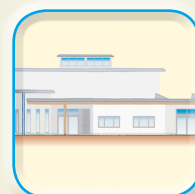
Gardens



Agriculture



Industrial



Commercial