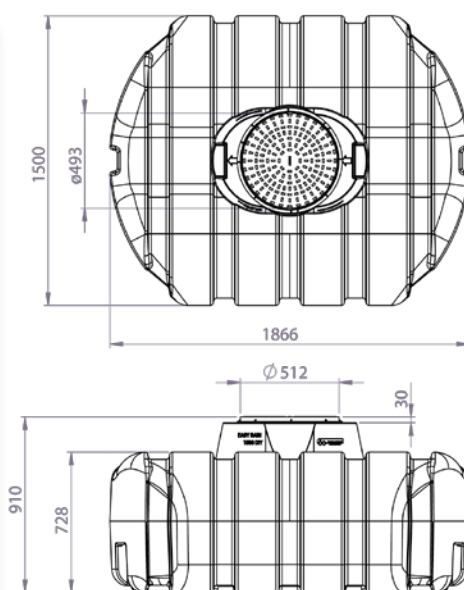


SHALLOW-DIG FLAT TANKS

- Lightweight, easily handled
- Low installation cost
- Only 5cm height difference between inlet and overflow
- Available with or without integral filter
- Ideal for retrofit in existing gardens
- Can be installed in ground water up to tank shoulder
- Available in 1500L & 3000L sizes
- 20 year warranty



1500L tank dimensions. Access shaft extensions are available (see over).

Wisy® Flat Tanks

A range of one-piece polypropylene tanks, designed to minimise the excavation work required, resulting in reduced installation cost and time, and less excavation material to dispose of.

These tanks also have the advantage of requiring no concrete backfill.

The tanks are available as bare tanks or with an inbuilt Wisy® LineAr filter with calmed inlet arrangement, and form a perfect combination with our WRAS-Approved Sigma rainwater unit.

For details of LineAr filters see datasheet LF/16/01 For details of Sigma unit see datasheet RZ/15/01



UK agent and distributor for
Wisy AG



Products for
rainwater utilisation



Flexible System Design

Our comprehensive range of specialist items has been developed specifically for Rainwater Harvesting Systems. Because the range consists of separate components, it has exceptional flexibility.

We supply equipment suitable for almost any system design, whether you're planning a system for a small house, school or large industrial or commercial premises.

SHALLOW-DIG FLAT TANKS



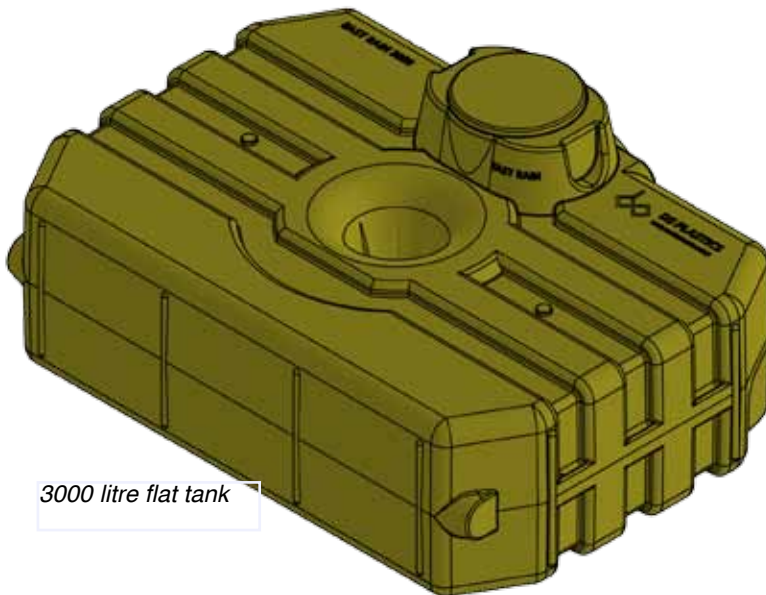
Built-in LineAr filter complete with calmed inlet diffuser. The filter element is of 1.4301 stainless steel and will never need replacing. When the tank is full excess water overflows through the filter outlet.



Calmed inlet diffuser prevents turbulence and avoids disturbance to float switches or sensors.



The mesh of the unique LineAr filter provides a near vertical surface that exploits the adhesive nature of water.



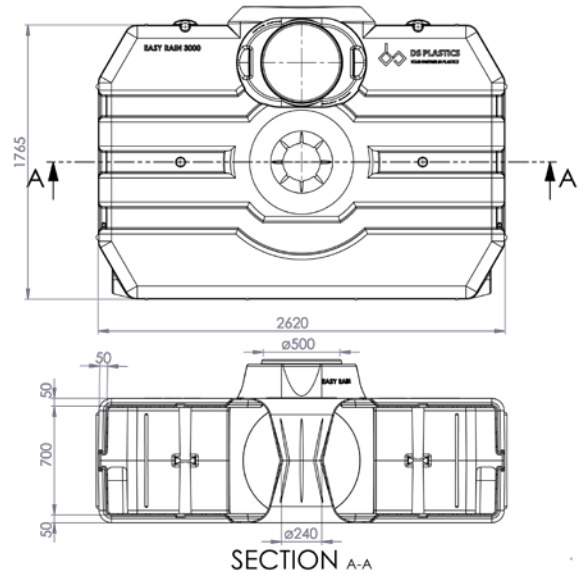
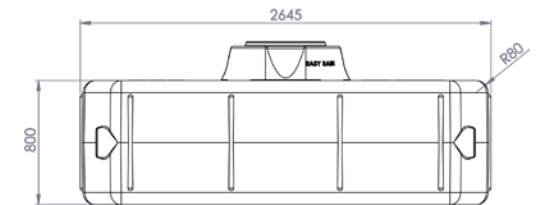
3000 litre flat tank



A riser section is available for the access shaft.

The section is 27cm high, and can be easily cut down to 21, 15, or 9cm depending on installation depth required.

The cover is secured with 3 retaining screws and has a load bearing capacity of 35kN.



3000L tank dimensions. Section A-A shows the central structural column. This gives the tank great rigidity.



Distributor:

Rainharvesting Systems Ltd.

The Green Shop, Calf Way,
Bisley, Stroud,
Gloucestershire GL6 7BX
Tel: 01452 772 000
Fax: 01452 772 008
E-mail: sales@rainharvesting.co.uk
Website: www.rainharvesting.co.uk

NB continuous development may necessitate change in these details without notice E&OE.

Data Sheet FL/17/01